



# Mardi Gras

2024 PROGRAMME & MAP

[www.newcarnival.co.uk](http://www.newcarnival.co.uk)

SATURDAY  
6TH  
JULY

FROM 3PM  
RYDE  
ISLE OF WIGHT

new  
carnival

WELCOME

Mardi  
Gras

This year's theme for the Isle of Wight Mardi Gras is **The Story of Carnival**, celebrating the history, global reach, and popularity of carnival culture.

Our 'Carnival Island' has a long tradition of carnival dating back to 1887! This year the UK is looking to introduce and ratify UNESCO's 'Intangible Cultural Heritage' recognition list, which means things like carnivals (or pantomimes, or even fish and chips!) could be formally recognised as important, valued

traditions, which in turn should help to give them more support for a sustainable future.

There are 24 school and community groups, 2 samba bands and a marching band all taking part this year! It is set to be a joyous, stand-out parade, focusing on **celebrating young people's creativity!**

We can't wait to celebrate this incredible community event with you!



IW Mardi Gras is all about hand made costumes designs by the children, increasingly using sustainable materials

# PARADE INFO



**DATE** | Saturday 6th July 2024

**THEME** | The Story Of Carnival

**MINI MARDI GRAS** | 11am-2:30pm Simeon  
Recreational Ground, Ryde  
Choice to join the parade at 3pm

**MAIN PARADE** | 3pm Simeon Recreational  
Ground, Ryde

**ARRIVING AT** | 3:45pm Union Street  
4pm The Esplanade

**QUIET ZONE** | 4pm near Eastern Gardens /  
Boating Lake by the Esplanade  
For those who prefer no  
loud music or drumming



# PARADE ROUTE



# FAMILY FUN

Mardi  
Gras

**MINI MARDI  
GRAS**

Free family carnival  
activities

**TIME**

11am - 2:30pm, just turn up

**PLACE**

**Simeon Recreational Ground**  
Choice to join the parade at 3pm

**ACTIVITIES**

Face Painting  
Circus Skills  
Craft Activities  
Play Area  
Dressing Up  
Drop-in Workshops  
Games

**FREE!**



# PERFORMERS

TOPIC	GROUP	THEME
<b>Sham El Nessim: Ancient Egypt</b>	Godshill Primary School	History
<b>Dionysia: Ancient Greece</b>	St Blasius Academy	History
<b>Bacchanal: Ancient Rome</b>	Love Coco Monroe Dance group	History
<b>Beltane: May Day</b>	St Helens Primary School	History
<b>Venice Carnival and Grand Balls</b>	Wroxall Primary School	History
<b>Feast of Fools</b>	Monkton Arts	History
<b>Batik Festival</b>	IW Indonesian Community	Global
<b>IW Summer Carnivals</b>	Priory School	Global
<b>Caribbean Carnival: Trinidad &amp; Tobago</b>	Ryde School Pre Prep	Global
<b>Caribbean Carnival: Junkanoo</b>	The Way Forward Programme	Global
<b>Giants and Big Heads</b>	Arreton CE Primary School	Global
<b>Quebec Carnival</b>	Binstead Primary School	Global
<b>New Orleans Carnival</b>	Burlesque Chair Dance with Miss Autumn Star	Global
<b>Rio Carnival</b>	IW College Preforming Arts	Global
<b>Bridgewater Carnival</b>	Gatten and Lake Primary School	Global
<b>Sappro Snow Festival</b>	Carni Beats	Global
<b>Disability Pride Parade</b>	St George's School	Global
<b>Pride Parade</b>	Ryde Academy Dancers	Global
<b>Dia Del Los Muertos: Mexico</b>	Dover Park Primary School	Global
<b>Notting Hill Carnival</b>	Oakfield CE Primary School	Global
<b>The Future of Carnival</b>	Broadlea Primary School	Future
<b>The Future of Carnival</b>	Medina House School	Future
<b>The Future of Carnival</b>	Greener Futures & Mini Mardi Gras	Future

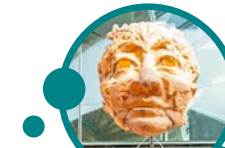
SPECIAL CONTRIBUTORS

## THINGUMAJIG THEATRE

Thingumajig Theatre are based in West Yorkshire and specialise in **giant outdoor interactive puppet walkabout acts**. Performing in over 14 different countries, their work has even been featured in a major Disney Film!

Andrew and Kathy Kim, from internationally acclaimed Thingumajig Theatre, delivered a masterclass for New Carnival creative volunteers and freelance artists in May to help create a large scale 'Green Man Puppet'.

New Carnival can't wait for the Green Man's first outing, watch out... or up!



SPECIAL CONTRIBUTORS

## THE ZODIAC ALL STARS

The Zodiac All Stars are a non-profit charity based in Nottingham. They are a carnival dance troupe made up of young performers from ages 7-18 years.

High energy and high-quality performances are a must-see act this year, you will be wowed!

**The young people help to design and make their own costumes**, winning competitions

and performing at many summer carnivals. We look forward to welcoming the Zodiac All Stars back for 2024!





## SPECIAL CONTRIBUTORS

# SUSTENTA CARNIVAL

Sustenta Carnival is a social enterprise in Rio de Janeiro, Brazil, dedicated to creating a more sustainable carnival. **They collect discarded costumes (approximately 23 tonnes per carnival) to be reused and repurposed.** Some materials are transformed by Brazilian indigenous women into bags and fashion items, supporting their livelihoods.

The project also supports G.R.E.S Embaixadores da Alegria,

a disabled carnival troupe in Brazil. Some salvaged costumes are available for purchase by weight and shipped worldwide.

We're excited to feature some of these salvaged authentic costumes from Rio's famous carnival in our Mardi Gras Global section in 2024!



Eliane Góes (photographer)  
Ana Paulino (model)

SPECIAL CONTRIBUTORS

Mardi  
Gras

## ISLE OF WIGHT ADULT COMMUNITY LEARNING

The IW Adult Community Learning group took part in a course with New Carnival's artist and tutor, Gina Dyer, to create giant cardboard and paper mâché heads.

**Their heads are based on traditional characters from the 'Commedia dell'arte' era; Harlequin, Pierrot and Burlamacco.**

Commedia dell'arte is an early form of professional theatre originating in Italy, and was very popular in Europe between the 16th- 18th Centuries. The characters are often masked, and the performances include jokes and pantomime. The characters still feature in many carnivals, films and plays around the world today.



SPECIAL CONTRIBUTORS

## ISLE OF CREATIVITY YOUTH PROJECT

New Carnival's 'Isle of Creativity' group are made up of 14-30 year olds, and have been busy behind the scenes creating some special entries for this year's Mardi Gras parade.

**They have been learning costume design, willow sculpture techniques and puppetry with guest help from local drag performer, 'Quivers'!**

The Isle of Creativity group have also made costumes for the Ryde Academy dance group, themed on 'Pride Parades' and the IW college performing arts 'Rio'.



SPECIAL CONTRIBUTORS

## ISLE OF WIGHT INDONESIAN COMMUNITY

The IW Indonesian Community group have been working on their theme of 'Batik Festivals'. Thanks to a community grant from Sovereign Housing, we have been able to share their expert knowledge with local families who also helped to create complimentary costumes. They will all be joining in the Mardi Gras and for Ryde children's carnival.

**The IW Indonesian group have worked exceptionally hard producing exquisite costumes and props**, and we have learnt so much about Batik and the meaning of the patterns and symbols within the designs. Watch out for their stunning group entry!



# HOW YOU CAN HELP

New Carnival is an entirely grant funded, non-profit Community Interest Company. Year on year, our costs go up, yet our core funding does not. If you are able to donate to New Carnival we would be most grateful, even small amounts count.

**Your donation will ensure that we can continue to provide free family events and creative opportunities for children, young people and adults, engaging communities across the Island and beyond.**

A big thank you to all the volunteers for giving their time to support the Mardi Gras - you make magic happen! If you would like to volunteer, do get in touch.



## HOW YOUR DONATION CAN HELP

£5

A child's carnival costume

£20

A ferry ticket for one guest performer

£50

A school or community group inspiration session

£100

Carnival materials for a whole group to make costumes or a prop

£300

A full carnival workshop for approx. 30 children/adults

<https://gofund.me/53d87241>

Donate here

# CONTACT

CALL US



01983 716095

EMAIL



info@newcarnival.co.uk

WEBSITE



www.newcarnival.co.uk

MAILING LIST



http://eepurl.com/h2M025

FACEBOOK



TheNewCarnivalCompany

INSTAGRAM



new.carnival

DONATE



https://gofund.me/53d87241

HANNAH



GEMMA



Supported by:



Supported using public funding by  
**ARTS COUNCIL  
ENGLAND**



Design & illustrations by MooksGoo